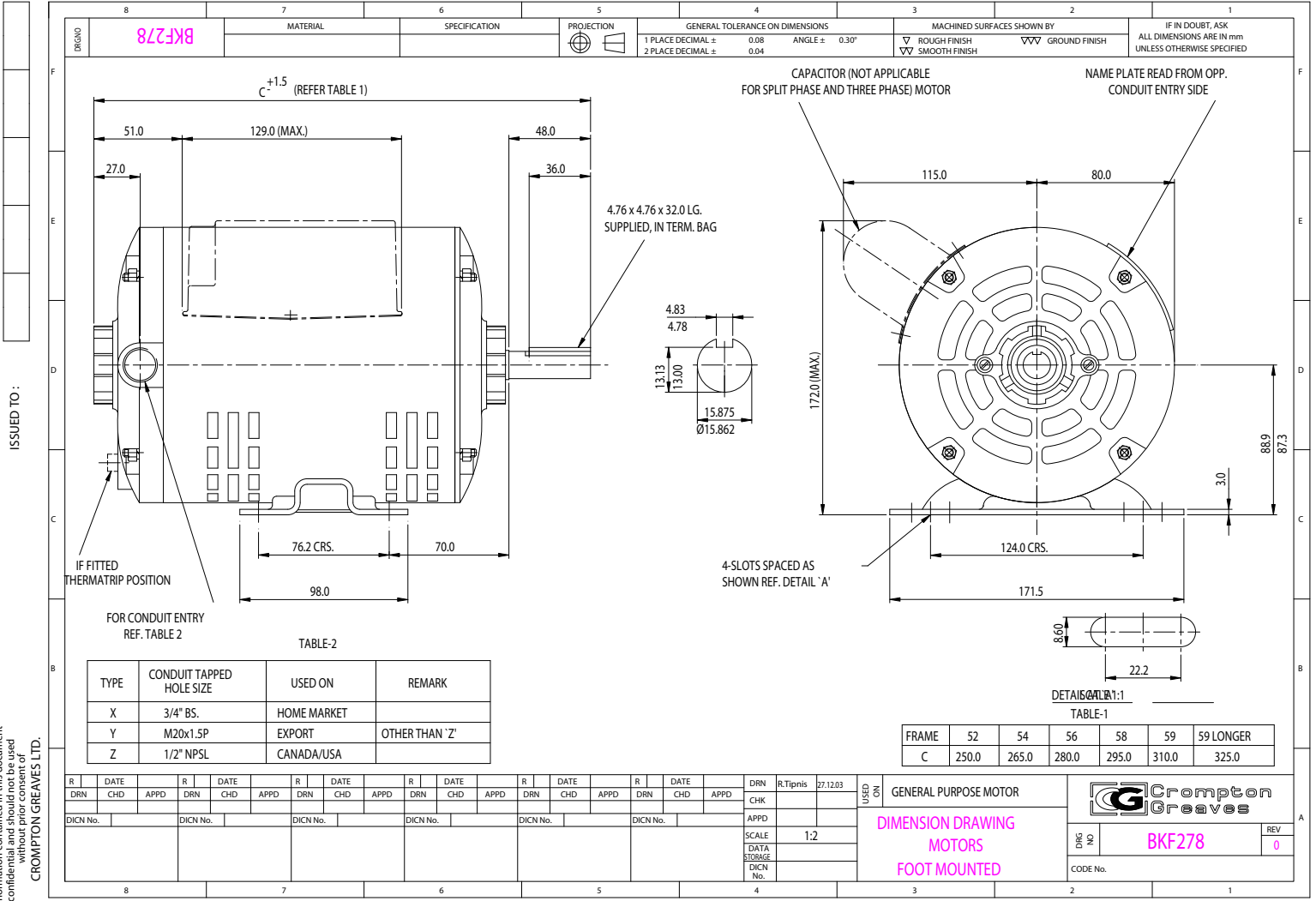


BKF278

PROJECTION	GENERAL TOLERANCE ON DIMENSIONS	MACHINED SURFACES SHOWN BY	IF IN DOUBT, ASK
	1 PLACE DECIMAL ± 0.08 ANGLE ± 0.30° 2 PLACE DECIMAL ± 0.04	▽ ROUGH FINISH ▽▽ SMOOTH FINISH	ALL DIMENSIONS ARE IN mm UNLESS OTHERWISE SPECIFIED



$C^{+1.5}$ (REFER TABLE 1)

CAPACITOR (NOT APPLICABLE FOR SPLIT PHASE AND THREE PHASE MOTOR)

NAME PLATE READ FROM OPP. CONDUIT ENTRY SIDE

4.76 x 4.76 x 32.0 LG. SUPPLIED, IN TERM. BAG

4-SLOTS SPACED AS SHOWN REF. DETAIL 'A'

FOR CONDUIT ENTRY REF. TABLE 2

TABLE-2

TYPE	CONDUIT TAPPED HOLE SIZE	USED ON	REMARK
X	3/4" BS.	HOME MARKET	
Y	M20x1.5P	EXPORT	OTHER THAN 'Z'
Z	1/2" NPSL	CANADA/USA	

DETAIL 'A' 1:1
TABLE-1

FRAME	52	54	56	58	59	59 LONGER
C	250.0	265.0	280.0	295.0	310.0	325.0

R	DRN	DATE	CHD	APPD	R	DRN	DATE	CHD	APPD	R	DRN	DATE	CHD	APPD	R	DRN	DATE	CHD	APPD	DRN	R	Tipnis	27.12.03	USED	GENERAL PURPOSE MOTOR	
DICN No.					DICN No.					DICN No.					DICN No.						SCALE	1:2				
																										DWG NO. BKF278
																										REV 0
																										CODE No.

The information contained in this document is confidential and should not be used without prior consent of CROMPTON GREAVES LTD.

JULY 97