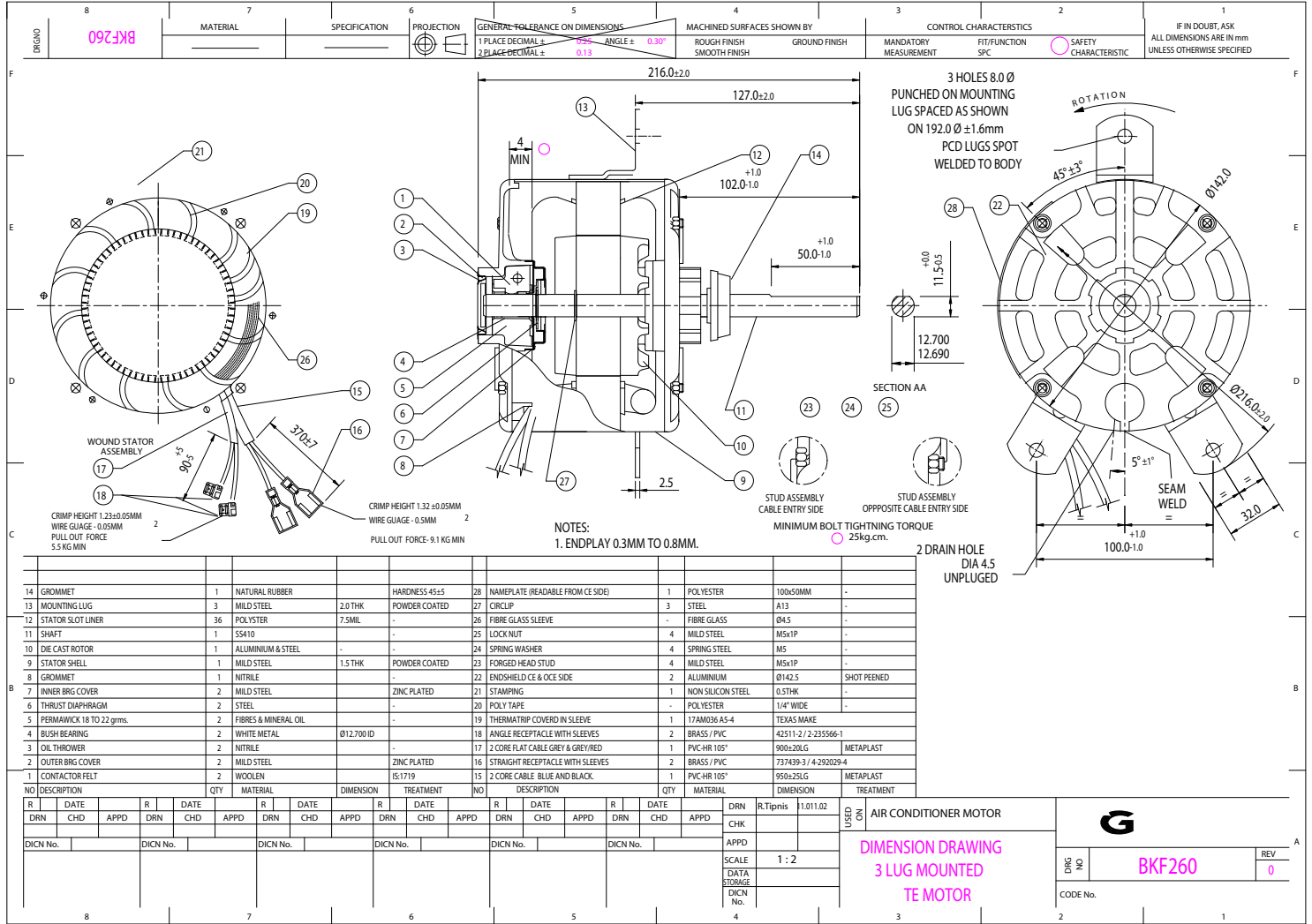


BOMBAY
 MARKING
 DESIGN
 QA
 PRD
 ISSUED TO :
 CONTROL PLAN #



NOTES:
1. ENDPLAY 0.3MM TO 0.8MM.

NO	DESCRIPTION	QTY	MATERIAL	DIMENSION	TREATMENT	NO	DESCRIPTION	QTY	MATERIAL	DIMENSION	TREATMENT
14	GROMMET	1	NATURAL RUBBER		HARDNESS 45±5	28	NAMEPLATE (READABLE FROM CE SIDE)	1	POLYESTER	100x50MM	-
13	MOUNTING LUG	3	MILD STEEL	2.0 THK	POWDER COATED	27	CIRCLIP	3	STEEL	A13	-
12	STATOR SLOT LINER	36	POLYESTER	7.5MIL	-	26	FIBRE GLASS SLEEVE	-	FIBRE GLASS	Ø4.5	-
11	SHAFT	1	S5410	-	-	25	LOCK NUT	4	MILD STEEL	M5x1P	-
10	DIE CAST ROTOR	1	ALUMINIUM & STEEL	-	-	24	SPRING WASHER	4	SPRING STEEL	M5	-
9	STATOR SHELL	1	MILD STEEL	1.5 THK	POWDER COATED	23	FORGED HEAD STUD	4	MILD STEEL	M5x1P	-
8	GROMMET	1	NITRILE	-	-	22	ENDSHIELD CE & OCE SIDE	2	ALUMINIUM	Ø142.5	SHOT PEENED
7	INNER BRG COVER	2	MILD STEEL	-	ZINC PLATED	21	STAMPING	1	NON SILICON STEEL	Ø5THK	-
6	THRUST DIAPHRAGM	2	STEEL	-	-	20	POLY TAPE	-	POLYESTER	1/4" WIDE	-
5	PERMAWICK 18 TO 22 grms.	2	FIBRES & MINERAL OIL	-	-	19	THERMATRIP COVERED IN SLEEVE	1	17AM036 A5-4	TEXAS MAKE	-
4	BUSH BEARING	2	WHITE METAL	Ø12.700 ID	-	18	ANGLE RECEPTACLE WITH SLEEVES	2	BRASS / PVC	42511-2 / 2-235566-1	-
3	OIL THROWER	2	NITRILE	-	-	17	2 CORE FLAT CABLE GREY & GREY/RED	1	PVC-HR 105"	900x20LG	METAPLAST
2	OUTER BRG COVER	2	MILD STEEL	-	ZINC PLATED	16	STRAIGHT RECEPTACLE WITH SLEEVES	2	BRASS / PVC	737439-3 / 4-292029-4	-
1	CONTACTOR FELT	2	WOOLEN	IS:1719	-	15	2 CORE CABLE BLUE AND BLACK	1	PVC-HR 105"	950x25LG	METAPLAST

R	DATE	R	DATE	R	DATE	R	DATE	R	DATE	R	DATE	DRN	R.Tipnis	1.011.02
DRN	CHD	APPD	DRN	CHD	APPD	DRN	CHD	APPD	DRN	CHD	APPD	CHK		
DICN No.		DICN No.		DICN No.		DICN No.		DICN No.		DICN No.		SCALE	1 : 2	
												DATA STORAGE		
												DICN No.		

The information contained in this document is confidential and should not be used without prior consent of CROMPTON GREAVES LTD.

G

AIR CONDITIONER MOTOR

**DIMENSION DRAWING
3 LUG MOUNTED
TE MOTOR**

DRG NO.	BKF260	REV	0
CODE No.			